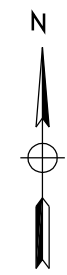
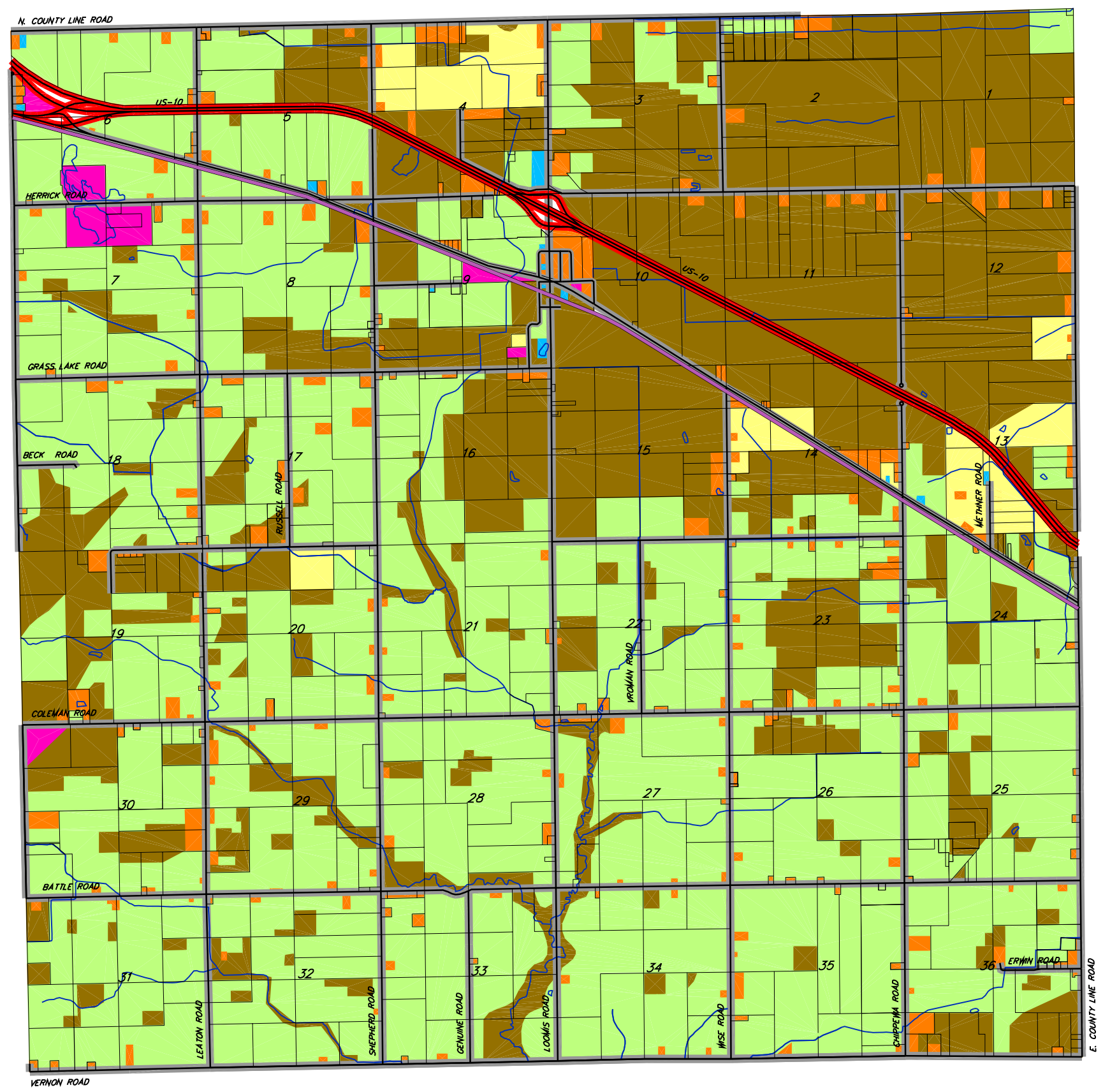


WORKORDER NO.:  
 DESIGNED BY:  
 DRAWN BY:  
 CHECKED BY:  
 APPROVED BY:  
 PLOTTING SCALE:  
 RET. F.B. PG.  
 ACAD FILE:



SCALE: 1" = 1600'

WISE TOWNSHIP  
 T.16N.-R.3W.  
 ISABELLA COUNTY, MICHIGAN

**LAND USE LEGEND**

- AGRICULTURAL
- COMMERCIAL
- RESIDENTIAL
- PUBLIC/SEMI PUBLIC
- VACANT
- WOODED

MARK	REVISIONS	DATE
THE WORK REPRESENTED BY THIS DRAWING WAS DESIGNED BY THE ENGINEER FOR THIS SPECIFIC APPLICATION AND SPECIFIC LOCATION DESCRIBED HEREON IN ACCORDANCE WITH THE CONDITIONS PREVALENT AT THE TIME THE DESIGN WAS DONE. THE ENGINEER DOES NOT GUARANTEE AND WILL NOT BE LIABLE FOR ANY OTHER LOCATION, CONDITION, DESIGN OR PURPOSE.		
WISE TOWNSHIP ISABELLA COUNTY, MICHIGAN		
<b>WISE TOWNSHIP            EXISTING LAND USE</b>		
Spicer Group 230 S. Washington Ave. P.O. Box 1689 Saginaw, MI 48605-1689 Tel. 989-754-4717 Fax. 989-754-4440		Spicer Group 1400 Zeeb Drive St. Johns, MI 48879 Tel. 989-224-2355 Fax. 989-224-2357
DATE	OCTOBER, 2003	
SCALE	AS SHOWN	SHEET 25 OF 48
STDS.		FILE NO.