

Zoning Map

Oscoda Township,
Iosco County, Michigan

Draft

April 29, 2005

Zoning Districts:

- R-1 Low Density Residential
- R-2 Medium Density Residential
- R-3 Mixed Residential
- R-4 High Density Residential
- R-5 Mixed Mobile Home Residential
- MH Mobile Home
- B-1 Central Business
- B-2 General Business
- WB-3 Wurtsmith Business
- R-T Residential Tourist
- RV Recreational Vehicle
- P Parking
- WM Waterfront Marina
- F Forestry
- I Industrial
- AG Agricultural
- E Extractive
- SD Shoreline
- NR Natural River
- WA Wurtsmith Airport
- WR-1 Wurtsmith Low Density Residential
- WR-2 Wurtsmith Medium Density Residential
- WR-3 Wurtsmith Mixed Residential
- A-1 Airport Protection Zone 1 & 2
- A-3 Airport Protection Zone 3
- A-4 Airport Protection Zone 4
- WI Wurtsmith Industrial

Road Legend:

- State or U.S. Highway
- County Local or Paved Road
- Unpaved Roads

Section Key:

Township Range
24N 08E

Section Number
24

Boundary Key:

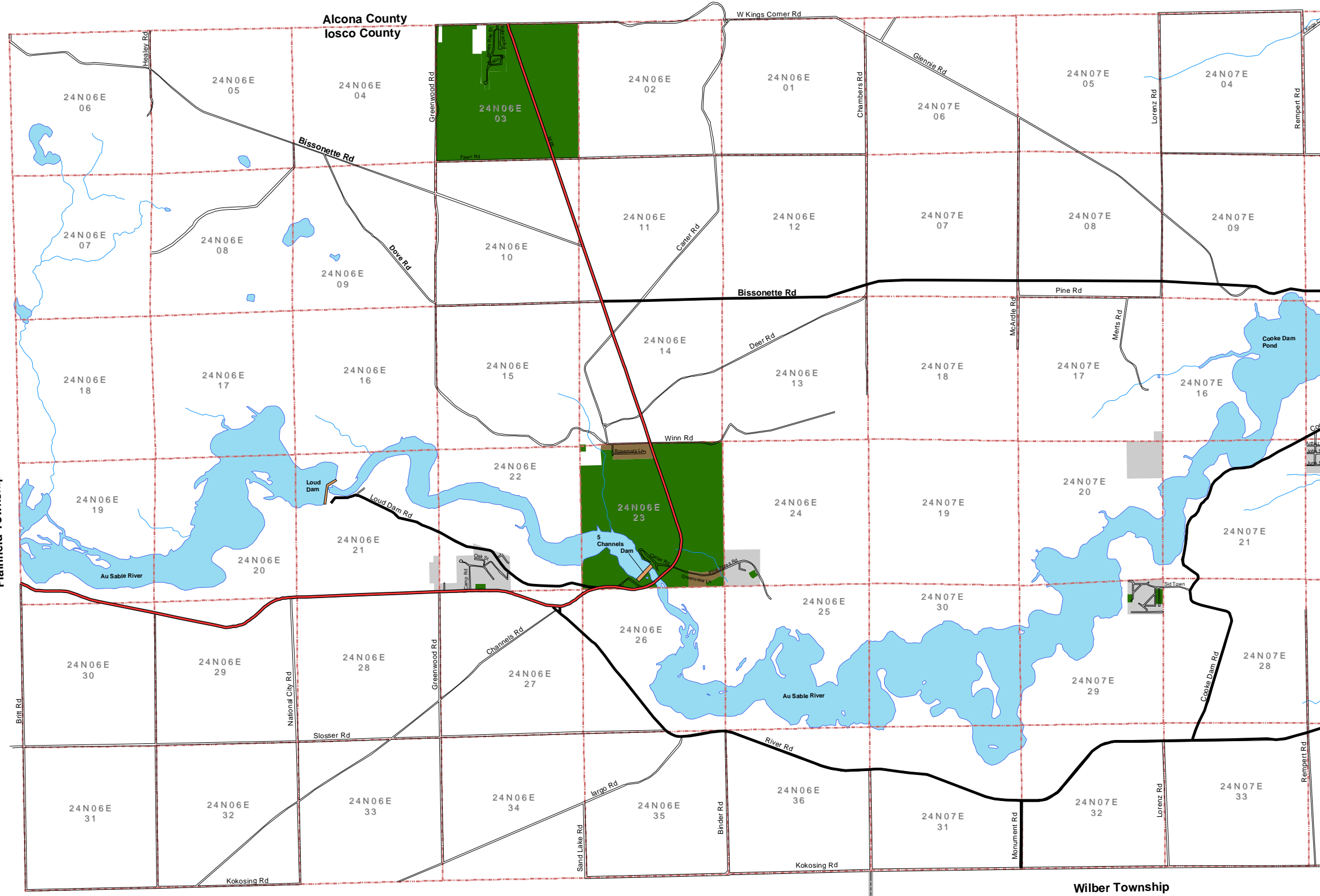
- Oscoda Township Boundary or Section Boundary
- Surface Water

Map Feature Source: Michigan Department of Natural Resources, 2004
Oscoda Township
Data Source: Oscoda Township

0 3,000 6,000 0
Feet

McKENNA
ASSOCIATES
INCORPORATED
www.mcka.com

Western Oscoda Township



Zoning Map Amendments:					
Date	Initials	Date	Initials	Date	Initials

This is the "Official Zoning Map" of Oscoda Township adopted by the Township Board on _____.

Supervisor _____

Clerk _____

Zoning district boundary lines of this map are approximate of actual zoning boundary lines. For exact dimensions and areas of zoning district boundaries, contact the Oscoda Township clerk.